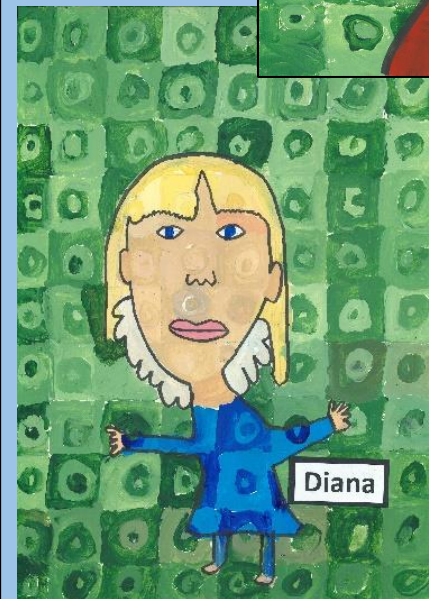
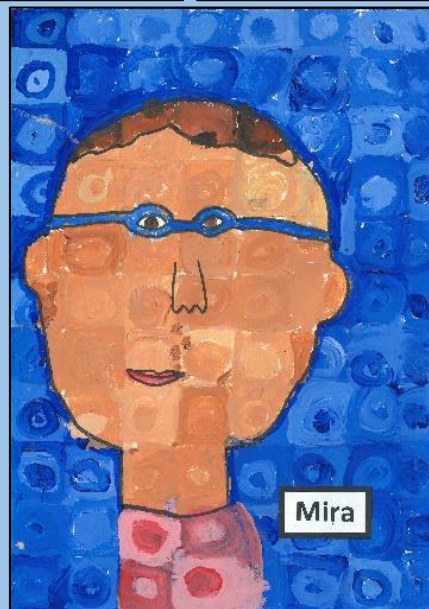
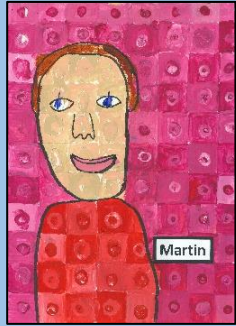
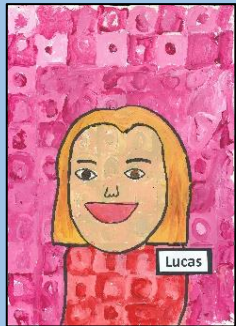
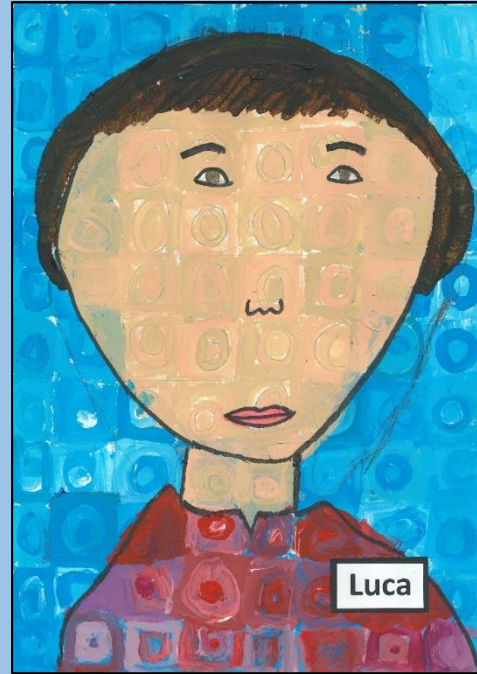
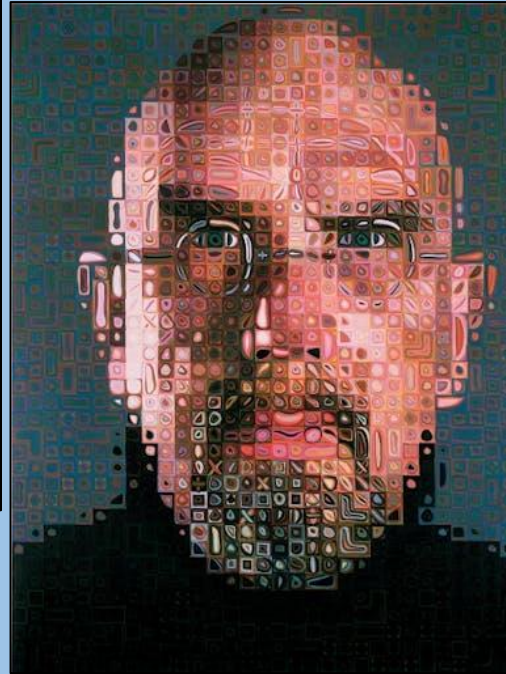


# Year 2 CAP - Chuck Close inspired artwork

Year 2 drew an outline of their faces on squared card, copying from a large photo of themselves. Then, they drew concentric circles in the squares. Next, Year 2 mixed tints of one base colour to paint the background and repeated this process with different colours.



We focused on the resilience theme of our Happiness Project theme, linking this to how Chuck Close had to show resilience and bounce back to keep painting after his paralysis.

Chuck Close was a celebrated American painter, visual artist and photographer known for his massive-scale, photorealist portraits. A key part of his work involved using a grid system to construct images from smaller units, often with a unique approach to colour. He is also remembered for his perseverance, continuing to create art after becoming paralysed in 1988 due to a medical incident.