



# Christ Church School, Hampstead

A village school in London inspiring *life in all its fullness*

Christchurch Hill, Hampstead, NW3 1JH  
[admin@cchurchnw3.camden.sch.uk](mailto:admin@cchurchnw3.camden.sch.uk)

020 7435 1361  
[www.christchurchschool.co.uk](http://www.christchurchschool.co.uk)



December 2025  
Newsletter 4

Christmas is coming!

Dear parents, carers and families,

It has been a busy November, including our annual Friendship Bracelet swop, the final important themes of our Happiness Project and ending with the opportunity to see every child's fabulous masterpiece in our brilliant Art Exhibition last week. Thank you very much for coming to support this event!

It promises to be an even busier December as we build up to Christmas – always the most exciting time of year in any primary school and we are certainly no different at Christ Church! There is a lot going on and many of our school Christmas events and traditions may seem a bit of mystery if you are new or newish to our school. Please ask if you aren't sure about anything – ask me, class teachers or in the office – everyone will be happy to help! Thank you in advance for all your support with bringing things in, donating to our Christmas charity collections, helping at the Friends events and, most importantly, coming to our Christmas events. It makes our Christmas school events all the more special to have so many parents and family members there, helping us to form a real community around our school. With very best wishes for the busy month ahead and many thanks again for all your Christmas support,

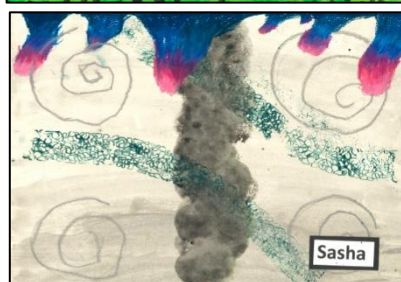
Katy Forsdyke, Head teacher



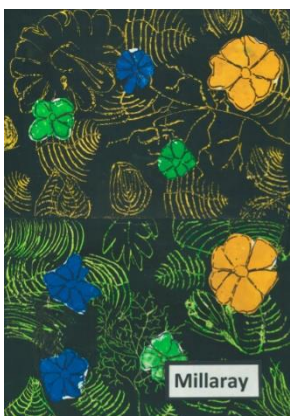
Ben



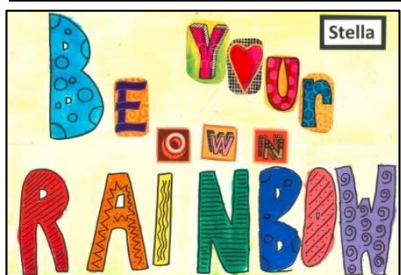
Zachariah



Sasha



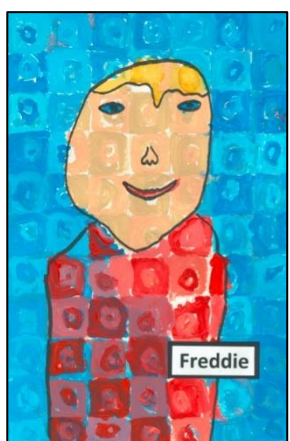
Millaray



Stella



Nina



Freddie

## Wonderful art work promoting our Happiness Project themes!

Congratulations to all the children on creating some impressive artworks for our Arts Project Exhibition this term. Classes drew inspiration from our Happiness Project themes including the importance of belonging to something bigger (Reception's beautiful collages of the school symbol), of spending time in nature (Year 3's striking flower prints) and of celebrating our own uniqueness (Year 5's bold slogan art). Classes also drew inspiration from artists as diverse as Andy Warhol, Hilma af Klint, Bob and Roberta Smith, Beatriz Milhazes, Chuck Close, Keith Haring and Faith Ringgold, learning about their lives and using their techniques.

### Dates December

Week beginning 1<sup>st</sup> – last after school clubs this week

Tuesday 2<sup>nd</sup> – Flu spray vaccination offered to all classes in school – information and link to consent forms has been sent to parents. Please ask the school office if you need the email and links resent.

Friday 5<sup>th</sup> – non-uniform day – please bring a bottle for the Christmas Fair – all these donations are used on the Bottle Stall – thank you!

### Sunday 7<sup>th</sup>, 12-2.30pm

**Christmas Fair!** Stalls and games, food and drink, raffle, Santa's Grotto and much more! All money raised goes to support the school and everyone is very welcome. Thank you to everyone helping with preparations or on the day. Every child is busy making a craft item to sell at the Fair – for the first hour of the Fair these will only be sold to the correct family, after that they can be bought by anyone. A great incentive to get to the Fair early!

Thursday 11<sup>th</sup>, 10am – **Nativity Play** starring all of our Reception, Year 1 and Year 2 classes. Please come to the main church door just before 10am – all family members very welcome!

### Friday 12<sup>th</sup> – Friends Present Sale

This is the children's opportunity to buy some small secret Christmas gifts for family members! Please send in (on the day) seven small, unwrapped gifts, plus £5 in coins and a bag for your children to bring home the gifts they buy. It is also helpful if younger children have a list of family members to buy for. We wrap and label all the gifts in school during the day and the money raised goes to the Friends Association.



## Friendship bracelets for new friends!

As part of our PSHE week thinking about positive relationships, we held our annual friendship bracelet swop. Every child and



adult in our school made a bracelet which we swapped with a new friend in a different class. Then we all had a happy playtime playing with and getting to know our new friends!

### Punctuality please!

Please make every effort to make sure your child is in the playground before the bell rings at 8.50am each morning. There are quite a few children arriving late at the moment. Children feel embarrassed and unsettled when they are late and they miss the important beginning-of-the-day information in their classrooms as well as the learning which starts straight away. There are always unforeseen circumstances which mean we are all late sometimes but, if you are often running up the hill, pressing the buzzer to get into school once the gate has closed or signing your child in late at the office, please make a renewed effort to start your journey to school earlier. It makes a real difference to a happy and settled start to the day if children are on time. Thank you very much for your help.

### Information and reminders

#### Policies, including AI Policy

Governors and staff have recently reviewed the following school policies. You can find all our policies on our website or ask for a paper copy from the school office:

- Policy on Physical Contact with Pupils
- PPA (planning, preparation and assessment) time policy

Staff and governors have also agreed a new AI (Artificial intelligence) policy which starts to set out how we do and don't use AI at school. Key points for parents from this policy:

- we will be starting to incorporate teaching about AI into our computing curriculum in the coming terms, especially for older classes;
- staff are starting to explore how to use AI to save them time (e.g. in resource preparation) but we will not use AI for any task which requires a personal response and we will always check the outputs of AI;
- we will not enter any sensitive or personal data into AI (e.g. pupil names or photos);
- we do not want pupils to use AI to complete school tasks at home (unless we specify this) and we ask parents to help us to encourage children to do their own thinking, please!

We will be reviewing this policy regularly as technology and training in this area develops.

### Healthy School Street scheme

Thank you for your cooperation with the Council's new Healthy School Street Traffic restrictions on Christchurch Hill and surrounding roads. The restrictions apply from 8.30-9.15 and from 3.00-4.00 every week day during term time and you can give feedback on the scheme to Camden's transport team at [healthy.school.streets@camden.gov.uk](mailto:healthy.school.streets@camden.gov.uk).

**Please still stay safe – the streets outside the infant gate are not completely car-free, so please stay on the pavements and take care when crossing the roads. Please also do not park on yellow lines, driveways or emergency exits in areas surrounding the area covered by the scheme.**

### Applications for 2026 Reception class

The application deadline for applying for Reception for 2026 is 15<sup>th</sup> January. If you are applying for a younger sibling, please make sure you complete the online application form on the Camden admissions website **and** return the school supplementary form to school. You can get a supplementary form from the school office or you can download a copy from the school website.

### December dates continued

#### Monday 15<sup>th</sup> Christmas Jumper Day!

We will be collecting cash donations for our Christmas charities (Toilet Twinning and Foodcycle Camden). Anything Christmassy will do – shop bought or home-made!

Tuesday 16<sup>th</sup> – Christmas Lunch for children who usually have school meals. If your child usually has packed lunch, you might want to pack them something Christmassy! All children will be making Christmas hats for homework to wear.

Wednesday 17<sup>th</sup>, 2pm –

**KS2 carol singing** in Hampstead High Street – all Y3, 4, 5 and 6 families very welcome to come to support us and help us raise money for our charities.

Wednesday 17<sup>th</sup>, 6pm – **School Carol service in Church** – all families very welcome! The school choir will be singing and the Friends will be providing refreshments after the service.

Thursday 18<sup>th</sup> – Pantomime Performance in school of 'Peter Pan' for all children - generously funded by the Friends Association.

Friday 19<sup>th</sup>, 11.15am –

**Christmas Service in Church** – all families warmly invited. We will open the main door to the Church just before 11.15am.

**Friday 19<sup>th</sup>, midday – all children collected for the holidays**

### January

**Monday 5<sup>th</sup> – all children back for the spring term**

**Welcome!** A warm welcome to Taylor, who has joined our Year 4 class this half term!

### Autumn class assemblies

These are the remaining class assemblies this term which all start at 10am; all family members are welcome; please wait by the main gate.

Friday 5<sup>th</sup> December – Y5 class assembly

There are plenty of photos of all the class assemblies (and other trips and events) which have taken place this term on our website [here](#).



### Happiness Project – review of our ten themes

Can your child remember each of the themes and something they have learnt from each one which can help to keep themselves and others happy?

