

General Information and Reminders

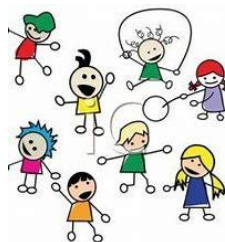
PE

PE will take place on Mondays. Please ensure that your child has the correct PE uniform in school every day.

- blue shorts/tracksuit trousers
- a grey t shirt
- plimsolls or a change of trainers for outside

Please ensure all clothes and plimsolls are clearly labelled with your child's name.

PE in Reception is taught by Mr Spadaccini.



Trips/Virtual Visits

- Heath outdoor learning once a fortnight
- Camden City Learning Centre (CLC)-date TBC

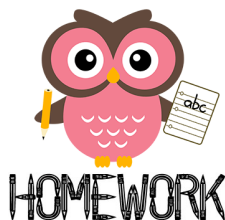
Our Heath outside learning will be every other Thursday afternoon. If you are available to help on any of these outings, I would be grateful if you could sign up on the sheets outside the Reception classroom.

Homework:

Homework will be sent home on Thursdays and is due back the following Tuesday. This term it will consist of a creative activity, reading practice and a letter of the week sheet. You could also support your child's learning by hunting for objects with these sounds in.

The reading diaries will be used in order to carefully monitor progress in reading as well as being a useful home-school link.

Please remember to sign into Google Classroom



Class assembly

Our class assembly this term will take place on Friday 25th March at 10am. All parents and families are warmly invited.



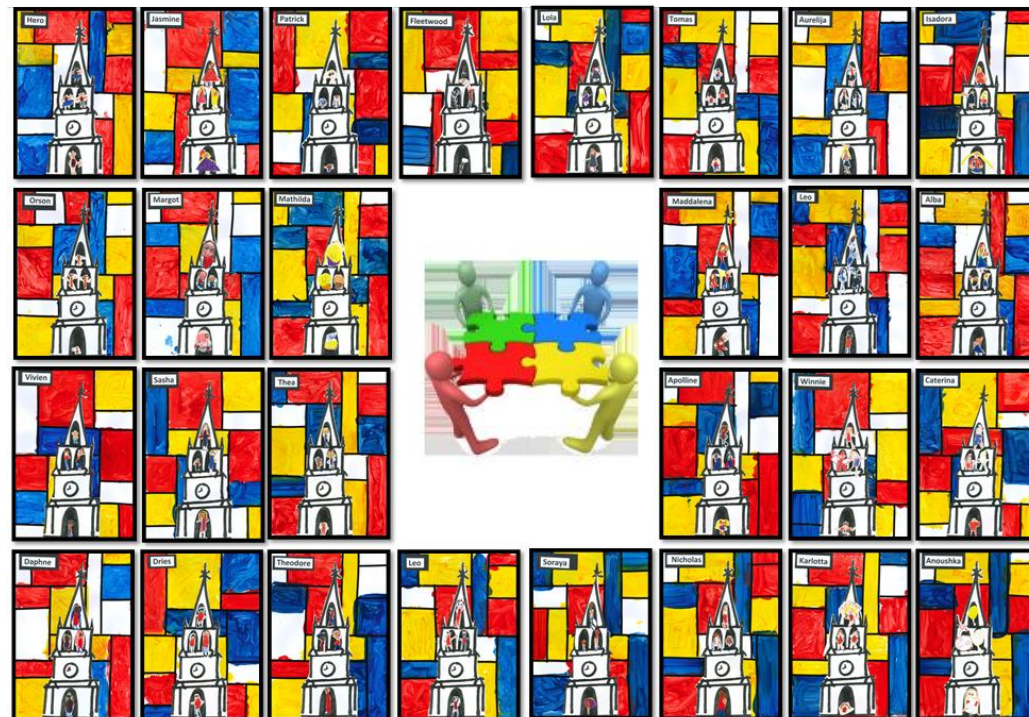
Reminders

- Please ensure all school clothes are named to prevent items getting lost.
- If your child is absent from school, please phone the school office on the first day of absence and write a note on his/her return.
- Your child has been given a Christ Church water bottle. Please make sure your child's water bottle is in school every day.
- **Please do not send sweets or any food/non-food items into school to celebrate birthdays, we are unable to hand these out to the other children in the class. Thank you.**



Christ Church School, Hampstead







A village school in London inspiring *life in all its fullness*



Reception

Spring Term 2022

| | |
|---|--|
|  | <h1 style="text-align: center;">Reception</h1> <p>Class Teachers: Miss Innes Support Staff: Miss Mardon and Miss Pearson Other adults working with Reception: Mr Spadaccini (PE) and Mr Oliver (Music)</p> |
| <p style="text-align: center;">Welcome to the spring term in Reception!</p> <p style="text-align: center;">This letter outlines our class topics, trips and general information for this term. If you have any questions, queries or concerns over the coming term, please do not hesitate to contact us.</p> <p style="text-align: center;">Kind regards, Miss Innes and the Reception Team</p> | |
| <p style="text-align: center;"><u>Retrieval Practice and Spaced Retrieval</u></p> <p style="text-align: center;"><i>"Retrieval practice is the act of recalling information from memory (with no or little support) and every time that information is retrieved, or an answer is generated, it changes that original memory to make it stronger."</i> Kate Jones</p> <p>We have been focusing on using retrieval practice to help children to learn and progress in all curriculum areas. We carefully think of activities which require children to remember previous learning in different ways to make sure that the children have the best chance of keeping their learning in their long-term memory. One way of doing this is to set homework activities that link directly to learning that the children have done in class. On occasion, we will send homework which links to learning which may have taken place a number weeks before. This is called spaced retrieval because children are asked to remember something after a gap in time.</p> | |
| <p style="text-align: center;">Literacy</p>  | <p>The children will be encouraged to write down the sounds they can hear in words and experiment freely with their own writing, through role-play and other classroom activities. This is intended to help the children gain confidence so that they see themselves as writers. Our topic work will be covering Traditional Tales including Goldilocks and the Three Bears and Jack and the Beanstalk.</p> |
| <p style="text-align: center;">Reading</p>  | <p>Children will continue to develop their phonemic awareness in daily phonics lessons to support with the tools to read. Reading books will continue to be changed once a week with group reading sessions and one-to-one reading supporting the children's development throughout the week. Please enjoy sharing stories with your child as regularly as you can, to cultivate and reinforce a love for reading. Please use the reading diary as a useful home-school link. Please continue to practise reading the High Frequency words found at the bottom of the homework sheets.</p> |
| <p style="text-align: center;">RE</p>  | <p>The children will be learning about Churches, thinking about special places to them and why churches are so important to the Christian community.</p> <p>In the second part of the Spring term the children will learn about the Easter story with a focus on Palm Sunday. We will think about how this special event is celebrated by Christians.</p> |

| | |
|--|--|
| <p style="text-align: center;">Numeracy</p>  | <p>This term we will be building on children's previous achievements. We will be consolidating their knowledge of numbers to 10 and extending the children's counting, reading and writing of numbers to 20. We will be extending the children's counting skills by doing addition and subtraction of numbers to 10. They will continue to develop their mathematical skills through games, singing, structured play and daily routines. We will also be investigating time and money.</p> |
| <p style="text-align: center;">Understanding of the World</p>  | <p>Children will be given opportunities to investigate and find out about materials, looking closely at similarities, differences, patterns and change. Children will be encouraged to ask questions about why things happen and how they work. On the Heath we will continue to observe and comment on changes in nature in the natural world. We will be looking at some basic map work to make routes to and from the heath. We will be using our topic on Chinese New Year to find out how it is celebrated around the world and thinking about how it links to celebrations we have such as birthdays and New Year.</p> |
| <p style="text-align: center;">Personal, Social and Emotional Development</p>  | <p>Our PSHE week takes place during the week commencing Monday 31st January 2022 and focuses on keeping ourselves safe and healthy. In Reception we will be learning to recognise likes and dislikes and how to make real, informed choices that improve physical and emotional health. We have a number of local visitors coming in to talk to us such as the local police and doctors.</p> |
| <p style="text-align: center;">Physical Development</p>  | <p>The children will be encouraged to develop their gross and fine motor skills and to move confidently and safely in a range of ways. We will practise using equipment effectively including pencils for writing and scissors for cutting. This term in PE, we will be focusing on negotiating space safely and ways to keep our bodies and minds healthy.</p> |
| <p style="text-align: center;">Expressive Arts and Design</p>  | <p>The children will develop their creative skills through art, music, role-play, drama and dance. They will be encouraged to experiment and practise a range of skills including drawing, painting and building. We will expand the children's knowledge of famous works of art from artists such as Van Gogh giving them the opportunity to use some specialised materials such as oil paints and canvas. This term the children will have the opportunity to work with local artists to create their own exhibition for Burgh House.</p> |
| <p style="text-align: center;">Communication and Language</p>  | <p>Many of the children are becoming confident and fluent speakers. This term we will be working on good questioning skills and using our tenses properly. Alongside this we will be using a range of texts and our 'word of the week' to extend and develop vocabulary.</p> |

Please see the reverse for general reminders and some key dates!